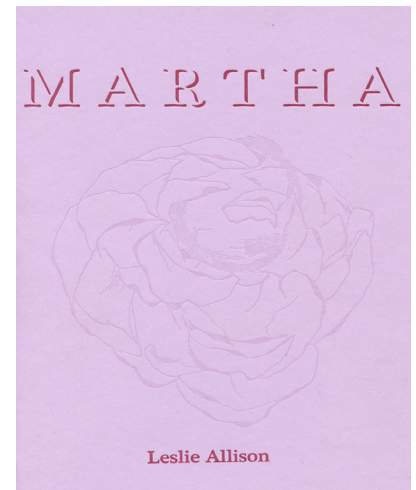


# Leslie Allison

## *Martha*

*Martha* is a lesbian fantasia that follows an unidentified narrator as she (un) wittingly becomes a key component of a volatile sexual quadrangle at Martha Stewart's manse. The other participants in this revelry include Martha herself; Madeleine Schubert, Martha's online pimp; and Kate, an angry ghost. In this louche paradise a girl has to go through a lot of pain before she gets to pleasure. Sex = power = drugs = housewares. Illustrations by Molly Schaeffer.



“ Opening our sullen heart-minds into the pure pleasures of an altered universe: plural, funny, sexy, bright and animate. Leslie Allison has made a new room for poetry, a hologram of a corner shimmering where no corner exists.

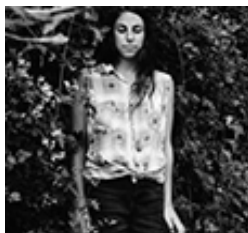
— ANN LAUTERBACH

Hand-bound Chapbook  
Poetry | \$12  
5.5" x 8" | 13 b&w illus. | 32 pp.

**Release Date: April 1, 2015**



Leslie Allison is a writer and performer. Her dance and poetry criticism has appeared in *HTML Giant* and *The Brooklyn Rail*. She composes choral music in collaboration with Francis Weiss Rabkin, and her band Cross released its debut album earlier this year. *Martha* (Spring 2015, Ugly Duckling Press) is her first chapbook.



Molly Schaeffer is a writer and illustrator living in Portland, OR, where she co-edits the journal *Big Big Wednesday*.

---

Media contact: Michael Newton • [michael@uglyducklingpresse.org](mailto:michael@uglyducklingpresse.org).

UGLY DUCKLING PRESSE is a nonprofit publisher of poetry, translations, performance texts, investigative forms, lost works and artist books. For more about UDP, visit [www.uglyducklingpresse.org](http://www.uglyducklingpresse.org).